

3 1 Lounge
2 Seats



320

The 320 Spa is ideal for small space. It offers you 3 seats including a lounge chair to offer you a complete relaxation experience. Enjoy a hydromassage session while optimizing your space.



Cabinet



Mohogany

Grey Marble

Shell



Storm Cloud, Midnight Canyon, Lucan Sun, Steeling Silver, Smoky Mountain

37 Jets

Size
85" x 65" x 34"

Weights

661 lb (empty)

2910 lb (with water)

Electrical : 220V, 60A

Info • 1 Dual Speed Pump 3hp & 7bhp

- 1 Skimmer Cartridge
- 1 Suction Grid

- Keyboard Gecko K1000
- Spa Cover 5'3"

Warranties

3 yrs : electronics & pumps
5 yrs : shell & frame

Options



BLUETOOTH AUDIO

Options



DIGITAL

Options



WIFI



LIGHTS

Options



LED JETS



WATER LINE

7 Seats 

420

The 420 Spa is designed with different jets in each seating. It will treat your entire body from your lower back to your shoulder.

Cabinet



Mahogany



Grey Marble

Shell



Storm Cloud



Moonlight Canyon



Tuscan Sun



Starling Silver



Smoky Mountain



50 Jets

Size
88" x 75" x 36"

Weights

705 lb (empty)

3616 lb (with water)

Electrical : 220V, 60A

Info

- 1 Dual Speed Pump 3hp & 7bhp
- 1 Skimmer Cartridge
- Keyboard Gecko K1000
- 1 Single Speed Pump 3hp & 7bhp
- 3 Suction Grid
- Spa Cover 5'3"

Warranties

3 yrs : electronics & pumps
5 yrs : shell & frame

Options



BLUETOOTH AUDIO

Options



DIGITAL

Options



WIFI

Options



LIGHTS



LED JETS



WATER LINE

520

The 520 Spa is designed to receive 5 persons. It's layout is ideal for couple to relax simultaneously in the 2 lounges section.

Cabinet



Mahogany



Grey Marble

Shell



Storm Cloud



Midnight Canyon



Tuscan Sun



Sterling Silver



Smoky Mountain

5 2 Lounges
3 Seats



60 Jets

Size
87" x 87" x 36"

Weights

750 lb (empty)

4497 lb (with water)

Electrical : 220V, 60A

Info

- 1 Dual Speed Pump 3hp & 7bhp
- 2 Skimmers Cartridge
- Keyboard Gecko K1000
- 1 Single Speed Pump 3hp & 7bhp
- 2 Suctions Grid
- Spa Cover 5'3"

Warranties

3 yrs : electronics & pumps
5 yrs : shell & frame



VULCANO JET

Options



BLUETOOTH AUDIO

Options



DIGITAL



Options



WIFI



LIGHTS

Options



LED JETS



WATER LINE

620

The 620 Spa is the only one that has a lounge configuration with seats. The bed allow you to relax and massage your whole body from back, legs and feet.

Cabinet



Mahogany



Gray Marble

Shell



Storm Cloud



Midnight Canyon



Usden Sun



Sterling Silver



Smoky Mountain

6 1 Lounge
5 Seats



56 Jets

Size
87" x 87" x 36"

Weights

740 lb (empty)

4497 lb (with water)

Electrical : 220V, 60A

Info

- 1 Dual Speed Pump 3hp & 7bhp
- 1 Single Speed Pump 3hp & 7bhp
- 2 Skimmers Cartridge
- 2 Suctions Grid
- Keyboard Gecko K1000
- Spa Cover 5"/3"

Warranties

3 yrs : electronics & pumps
5 yrs : shell & frame

Options



VULCANO JET

Options



BLUETOOTH AUDIO

Options



DIGITAL

Options



WIFI

Options



LIGHTS

Options



LED JETS



WATER LINE

720

The 720 Spa is more likely feature as an ergonomic spa, with it's distribution space within the seats. Each Station offers different type of massages du of the jet disposition.

Cabinet



Mahogany



Grey Marble

Shell



Storm Cloud



Mojave Canyon



Tuscan Sun



Stellar Silver



Snowy Mountain

7 Seats



47 Jets

Size
87" x 87" x 36"

Weights
749 lb (empty)
4497 lb (with water)

Electrical : 220V, 60A

Info

- 1 Dual Speed Pump 3hp & 7bhp
- 2 Skimmers Cartridge
- Keyboard Gecko K1000
- 1 Single Speed Pump 3hp & 7bhp
- 2 Suctions Grid
- Spa Cover 5'3"

Warranties

3 yrs : electronics & pumps
5 yrs : shell & frame



VULCANO JET

Options



BLUETOOTH AUDIO

Options



DIGITAL



Options



WIFI



LIGHTS

Options



LED JETS



WATER LINE

820

The 820 Spa is designed with individual space, including several sitting areas that create the ideal conversation layout. You will enjoy the moment of relaxation and memorable moments.

Cabinet



Mahogany



Grey Marble

Shell



Storm Cloud Midnight Canyon Tuscan Sun Sizzling Silver Smoky Mountain

7 Seats 



48 Jets

Size
91" x 91" x 39"

Weights
992 lb (empty)
4586 lb (with water)

Electrical : 220V, 60A

Info

- 1 Dual Speed Pump 3hp & 7bhp
- 2 Single Speed Pumps 3hp & 7bhp
- 2 Skimmers Cartridge
- 4 Suctions Grid
- Keyboard Gecko K1000
- Spa Cover 5/3"

Warranties

3 yrs : electronics & pumps
5 yrs : shell & frame



VULCANO JET

Options



BLUETOOTH AUDIO

Options



DIGITAL

Options



WIFI



LIGHTS

Options



LED JETS



WATER LINE

EQUIPMENT



Control Keypad

Transform your user experience with new color touchscreen Keyboard. The Spa is plug&play for wifi remote control.



Audio Bluetooth

The Audio Bluetooth System lets you play music with your smartphone, tablet or computer.



Diverter Valve

The Diverter Valve redirect water from one area of the hot tub to another.



Waterfall & Lighting

Enjoy your moments of relaxation thanks to the sound of the water from the waterfalls. The atmosphere is complete with the 5" color led Spotlight included and the led water line in option.



Vulcano Jet

The Vulcano jet is placed at the bottom in the middle of the spa. It is possible to concentrate the power of a pump on this jet.



Insulation & Cover

A five inches thick insulated cover is included. Our Spa are designed to conserve the heat of the water as much as possible and optimize electricity consumption.

OPTIONS & INFORMATION

The quality of a Canadian spa !

Enjoy with family or friends the benefits of the spa. Maple Spa offers a wide range of spas including all the necessary options to fully enjoy tonic massages.

Reliable, comfortable and efficient products, Maple Spa will bring you complete satisfaction.

High-end massage, easy maintenance, reinforced insulation, Canadian spas guarantee you great comfort and perfect tranquility.



VULCANO JET

This powerful massage jet built into the center of the spa.

Not available on all spas



WATER LINE

A touch of relaxation bright with its 7 colors. Live the multisensory experience.

Options



BLUETOOTH AUDIO

Connect a source music at your spa using the function Bluetooth built into the spa.



DIGITAL

The Gecko keyboard offers an intuitive experience.

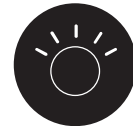
Options



WIFI

Remote control your processing settings of water: temperature and your savings modes and much more.

Options



LIGHTS & LED JETS

Light points added in the jets. They are synchronized with the chromotherapy system.



OUR FABRICATION

Quality & Innovation

All our spas are tested in real conditions of use for a period of 48 hours. Sealing, as well as the different functions of the spa can thus be tested in optimal conditions.

1. The shell

Our shells are thermoformed and laminated, excellent resistance to the temp.

2. The chassis

The chassis is made of autoclave wood which means that it is protected against biological aggressions and resistant to weather and moisture.

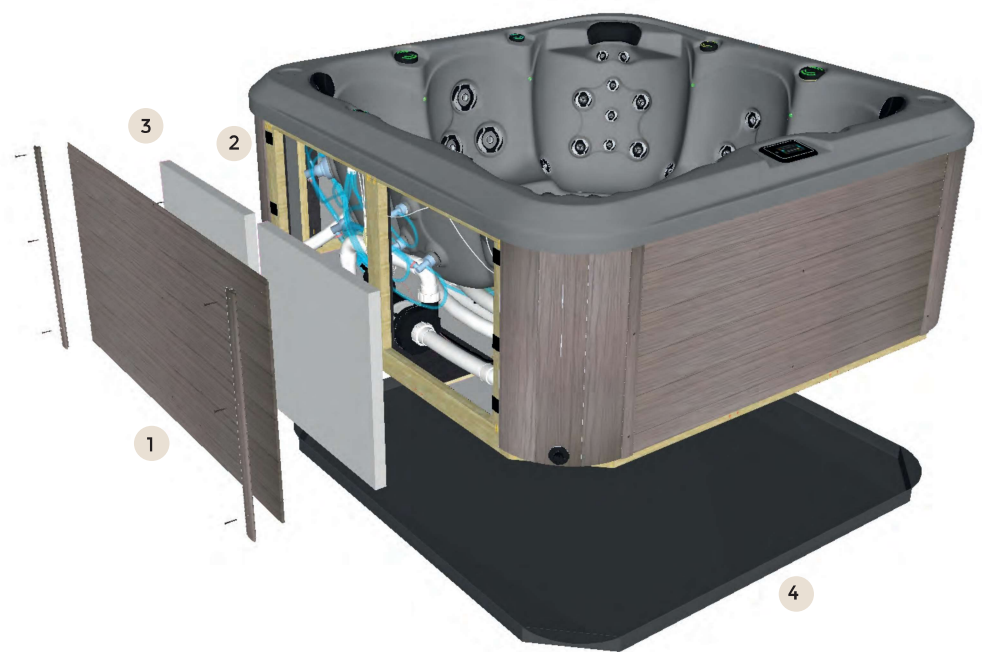
3. The insulation

The insulation of our spas is reinforced, it allows to have a very low energy consumption. We use a high-density polyurethane foam, equipped with two thermoreflective faces.

4. The base

It isolates electrical components from the ground. Its role is also to support the weight of the tank and to ensure its stability and balance.

OUR EXPERTISE

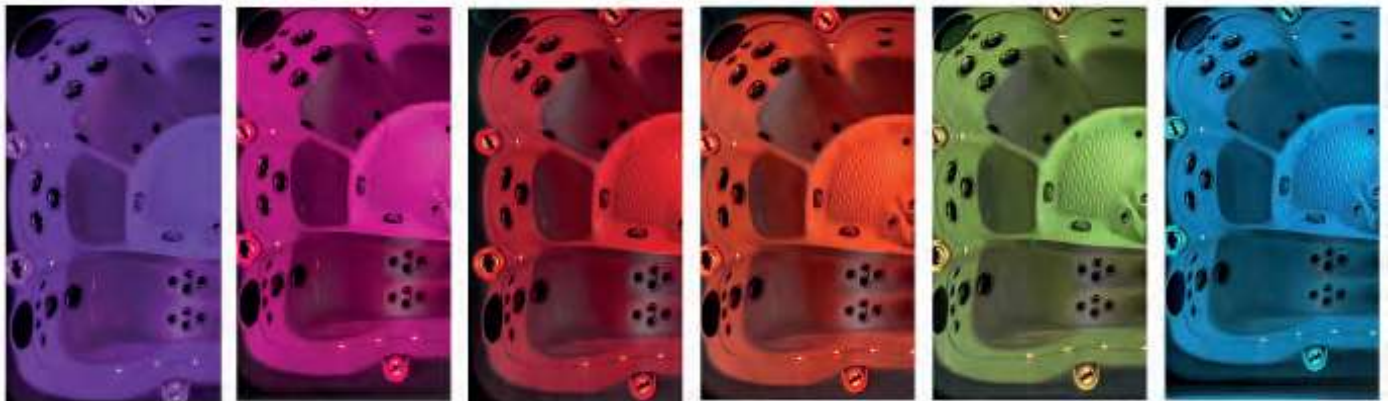


A Spa that will last for years ! We are specialised in manufacturing spas, from our quality control, engineers & our technicians we offer a premium product.

Chromotherapy & Wellness

The power of the colour on our health !
The Chromotherapy balance the body and provide through colours. It can help with insomnia, restore energy, reduce anxiety and tension or promote the immune system.

6 Variety of Colors



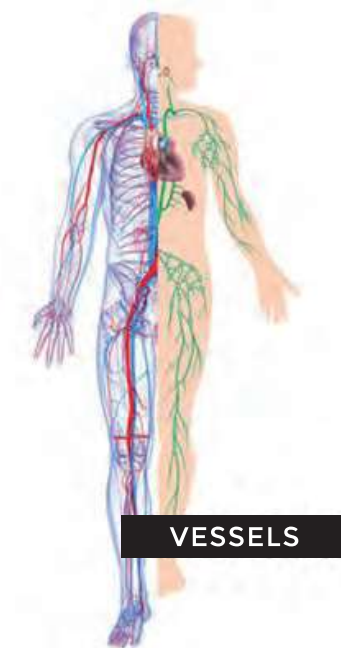
Meaning of the colours

- Purple: eliminate toxine, prevent insomnia
- Pink: reduction of stress
- Red: stimulating colour
- Orange: help digestion and optimist
- Yellow: energie & Brain stimulation
- Blue : relaxation & inflamatory

Lymphatic drainage

THE BENEFITS

- Reducing of swelling
- Reduction of pain
- Acceleration of the healing process
- Promotes nervous and muscular relaxation
- Relieving fatigue
- Treat cellulite, varicose veins & stretch marks
- Regeneration of body tissues
- Detoxification of the organism



The lymphatic system acts as a waste removal system in the body. It consists of a vast network of vessels containing lymph, a clear fluid that circulates through the body as a result of muscle and blood vessels contractions. Lymph contains excess of fluid from blood and tissues, the spa massage enhance the immune system which will be beneficial on the listed benefits.